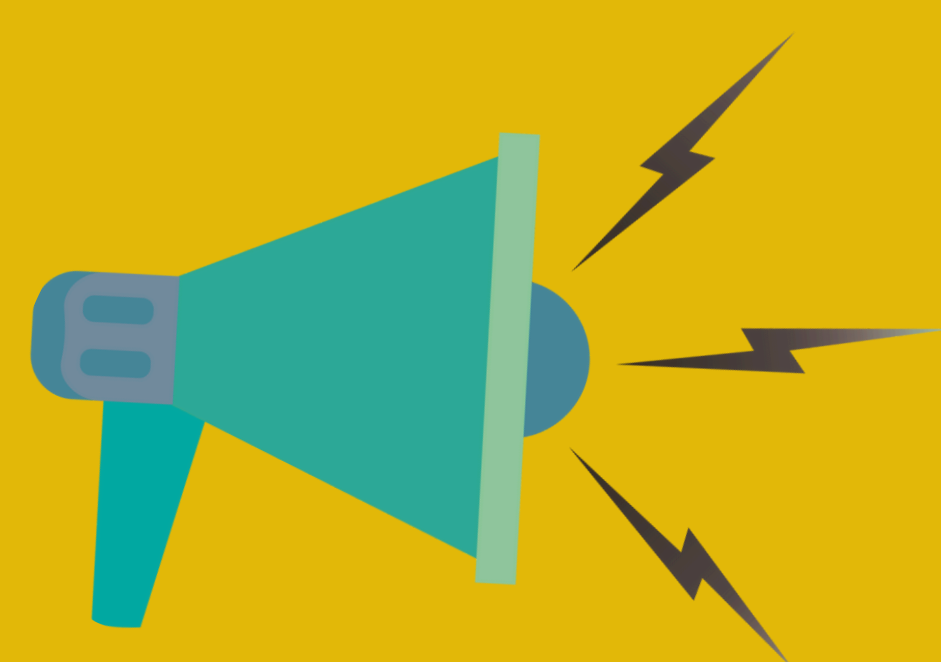




SRI RAM INTERNATIONAL SCHOOL

CBSE AFFILIATED



ANNOUNCES

PAANCH KA DUM CHALLENGE



- SELF DISCIPLINE
- CREATIVE AND ADAPTABILITY
- EMPATHETIC AND CULTURED (संस्कार)
- COMMUNICATES EFFECTIVELY
- EMOTIONALLY STRONG & ACTIVE PHYSICALLY



SMART STUDENT

- | | | |
|--|--|--|
| A
S
S
E
S
S
M
E
N
T | <ul style="list-style-type: none">• ATTENDANCE• H/W , C/W• QUALITY OF PROJECT• SUBMISSION• OPEN MINDEDNESS• COURTEOUS | <ul style="list-style-type: none">• HELPFUL• CLARITY• CHOICE OF LANGUAGE• PARTICIPATION IN• EXTRACURRICULAR ACTIVITY |
|--|--|--|

R E W A R D S

- 1ST: 2 QUARTERS TUITION FEE WAIVER
- 2ND: 1 QUARTER TUITION FEE WAIVER
- 3RD: ANNUAL FEE WAIVER
- 4TH: 1-MONTH TUITION FEE WAIVER
- 5TH: ACTIVITY FEE WAIVER

- COMMUNICATION
- NEATNESS
- PARTICIPATION
- CREATIVITY
- DISCIPLINE



ACTIVE TEACHERS

- | | | |
|--|---|--|
| A
S
S
E
S
S
M
E
N
T | <ul style="list-style-type: none">• COURTEOUS• USE / CHOICE OF WORDS• DOCUMENTATION & SUBMISSION• OVERALL APPERANCE• TEAMWORK• EXECUTION OR RESPONSIBILITY | <ul style="list-style-type: none">• OVERALL ACADEMIC PERFORMANCE• STUDENT ACADEMIC PERFORMANCE• ATTENDANCE• PUNCTUALITY |
|--|---|--|

R E W A R D S

- 1ST: 1 MONTH SALARY
- 2ND: 75% OF 1 MONTH SALARY
- 3RD: 50% OF 1 MONTH SALARY
- 4TH: 25% OF 1 MONTH SALARY
- 5TH: 10% OF 1 MONTH SALARY



SUPPORTIVE PARENTS

- APPRECIATING & MOTIVATING/ प्रशंसा और प्रोत्साहन
- PUNCTUALITY & REGULARITY/ समयपालन और नियमितता
- BEHAVIOUR & ATTITUDE TOWARDS STAFF स्टाफ के प्रति व्यवहार और दृष्टिकोण
- COOPERATIVE & ADHERENCE TO SCHOOL POLICY सहयोगी एवं विद्यालय नीति का पालन
- COMMUNICATION WITH SCHOOL/ विद्यालय से संवाद

- | | | |
|--|---|--|
| A
S
S
E
S
S
M
E
N
T | <ul style="list-style-type: none">• ATTENDANCE (PTM & CHILD)• PERFORMANCE (ACADEMIC & READING)• INTERACTION (TEACHER & PEERS)• EMOTIONAL SUPPORT• SUPPORT IN ACADEMICS & ACTIVITIES | <ul style="list-style-type: none">• TIMELY FEE PAYMENT• COMMITMENT & INVOLVEMENT• OPEN-MINDEDNESS• COURTESY & SENSITIVITY• GRATITUDE & ACKNOWLEDGEMENT |
|--|---|--|

R E W A R D S

- 1ST: REFUND OF 1 QUARTERS' FEE + PRIZE
- 2ND: REFUND OF 1 MONTH'S FEE + PRIZE
- 3RD: CASH COUPON OF RS 1100/- + PRIZE

Note: Winners will be selected classwise

- SAFETY & SECURITY / सुरक्षा
- POSITIVE ENVIRONMENT / सकारात्मक माहौल
- EFFICIENCY & ORDER / कुशलता व व्यवस्था
- PUNCTUAL & RELIABLE / समयबद्ध व विश्वसनीय
- STUDENT WELFARE (TRANSIT) / परिवहन में छात्र कल्याण



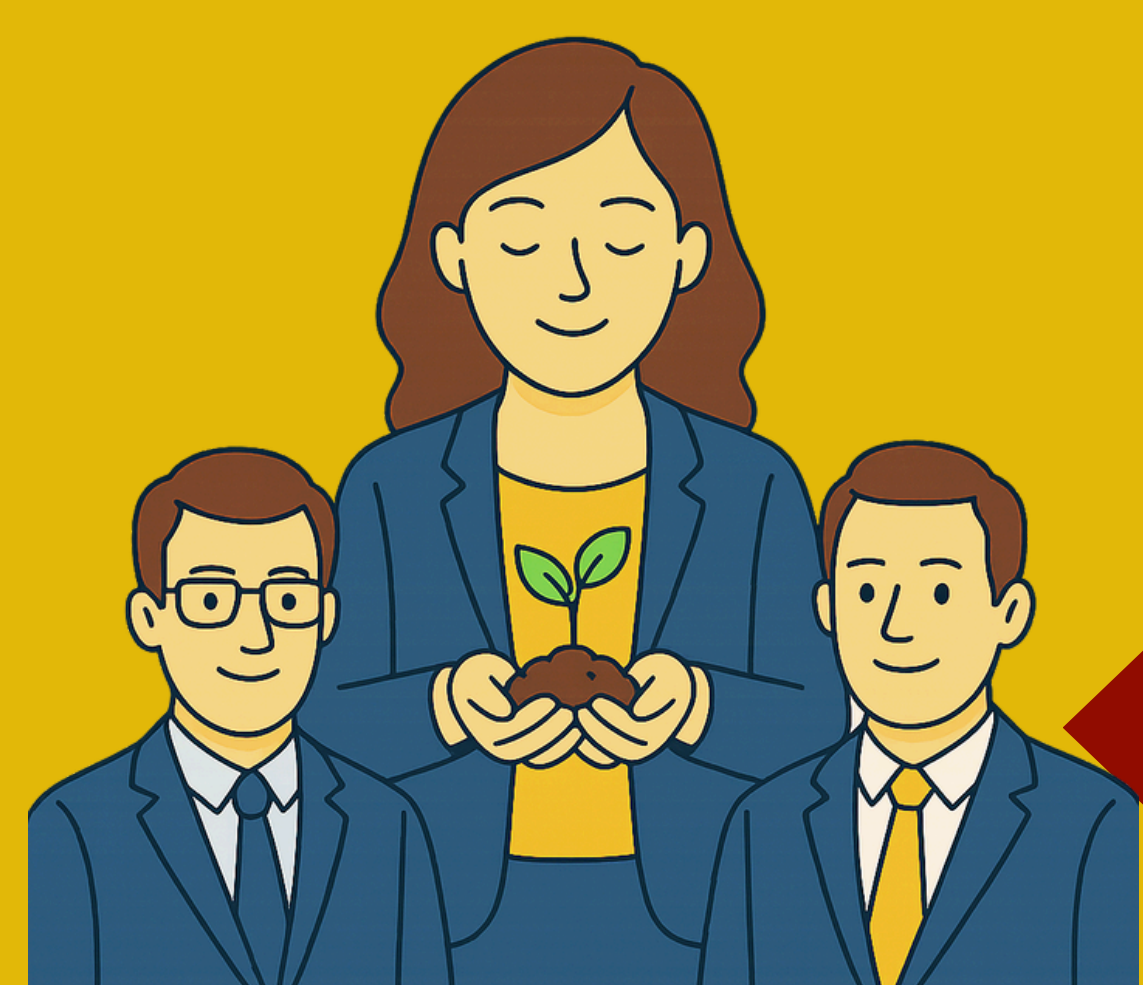
EFFICIENT STAFF

- | | | |
|--|---|--|
| A
S
S
E
S
S
M
E
N
T | <ul style="list-style-type: none">• ATTENDANCE• PUNCTUALITY• NEATNESS• BEHAVIOUR• COMMITMENT• OPEN MINDEDNESS• PEER INTERACTION• OVERALL INTERACTION | <ul style="list-style-type: none">• COURTEOUS ATTITUDE• SENSITIVE TOWARDS OTHERS• THANKFUL AND ACKNOWLEDGING• ATTENTIVE POSTURE• GESTURE• INVOLVEMENT |
|--|---|--|

R E W A R D S

- 1ST: 1 MONTH SALARY
- 2ND: 75% OF 1 MONTH SALARY
- 3RD: 50% OF 1 MONTH SALARY
- 4TH: 25% OF 1 MONTH SALARY
- 5TH: 10% OF 1 MONTH SALARY

- FINANCIALLY SUPPORTIVE
- INFRASTRUCTURE DEVELOPMENT
- PROFESSSIONAL SUPPORT
- MORAL AND EMOTIONAL SUPPORT
- REGULARITY



RESPONSIVE MANAGEMENT

- | | | |
|--|---|--|
| A
S
S
E
S
S
M
E
N
T | <ul style="list-style-type: none">• SALARY ON TIME• FINANCIAL SUPPORT IN EMERGENCY• STAFF BENEFITS• CLASSROOM DEVELOPMENT• TEACHING AIDS/ INSTRUMENT• TRAININGS• ANNUAL PICNIC• ATTENDANCE | <p>REWARD
1ST PRIZE - CAKE AND TROPHY</p> <p>PENALTY
<u>WOODEN SPOON</u>
will have to give sweets to all staff, students & parents</p> |
|--|---|--|

ASSESSMENT BEGINS TODAY